

**FOR BEST RESULTS DO NOT ATTACH THE ENCLOSED TEFLON™ STRIPS TO SIDES OF CASSETTE TRAY  
SEE PRE-INSTALLATION INSTRUCTIONS BELOW FOR VERTICAL AND HORIZONTAL APPLICATIONS.**

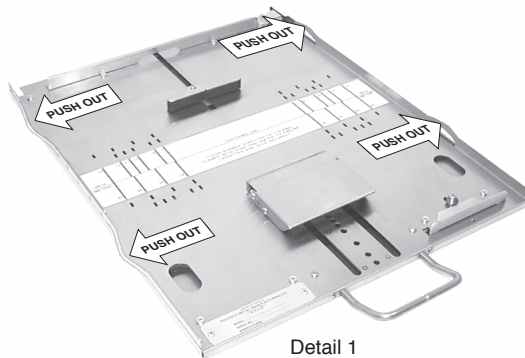
**PRE-INSTALLATION INSTRUCTIONS - WALL-STAND (VERTICAL APPLICATION)**

Vertical Bucky Only: Before inserting tray, clean the inside of the lower track/channel and apply the adhesive side of one Teflon™ strip to the bottom of the lower track/channel leaving approximately 1/8" project out from the front of the bucky. The bucky top track/channel does not require a Teflon™ strip.

**PRE-INSTALLATION INSTRUCTIONS - TABLES (HORIZONTAL APPLICATION)**

Carefully push the tray into the bucky. Check that tray clears all objects. If tray is a good fit inside bucky, do not install Teflon™ strips. If the bucky is too large for the tray causing a loose fit:

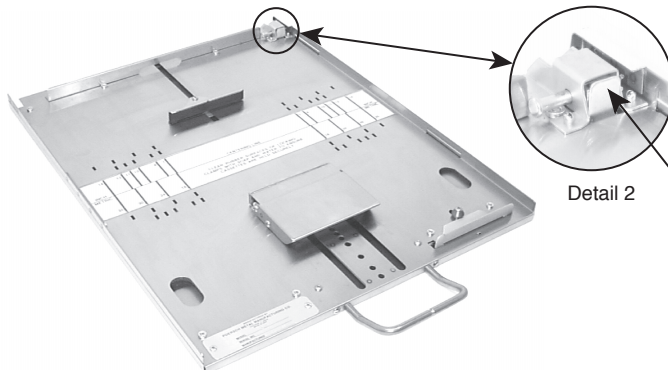
1. Install one or two Teflon™ strips to inside bucky tracks/channels, DO NOT attach strips to the tray.
2. If looseness still exists in fit between bucky and tray, see Detail 1 below, locate the 4 slots on the side flanges of the tray indicated by the 4 arrows.
3. Push out the flanges above these slots in the direction indicated by the arrows to increase the width of the tray, up to 1/16" per flange or 1/8" overall.



Detail 1

**REMOVING TRAY FROM BUCKY - VERTICAL & HORIZONTAL APPLICATIONS**

To remove the tray from the bucky push back small lever, see Detail 2



Detail 2

**PUSH BACK  
THIS LEVER  
TO RELEASE  
TRAY FROM  
BUCKY**

**SERVICE**

1. CAUTION: DO NOT REMOVE COVER FROM BOTTOM OF TRAY ALL INTERNAL COMPONENTS ARE FACTORY SET. WARRANTY IS VOID IF SEAL IS BROKEN.
2. If Cassette Tray malfunctions contact: Poersch Metal Mfg. Co.  
4027 W. Kinzie St.  
Chicago, IL 60624 USA  
Phone: (773) 722-0890 Fax: (773) 722-4122