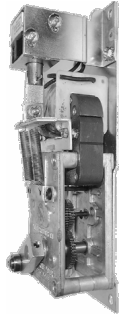


POERSCH RECIPROCATING BUCKYS, MODELS RRJ & RRK SERVICING AND REPLACEMENT PARTS

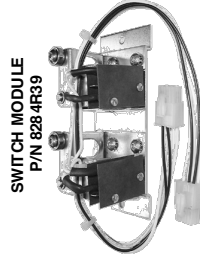
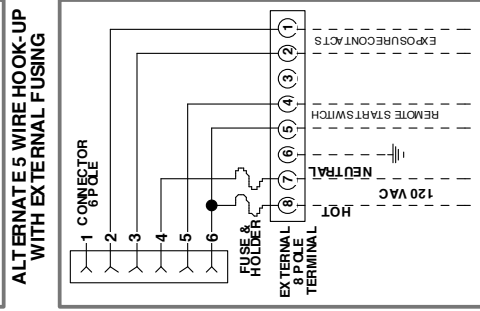
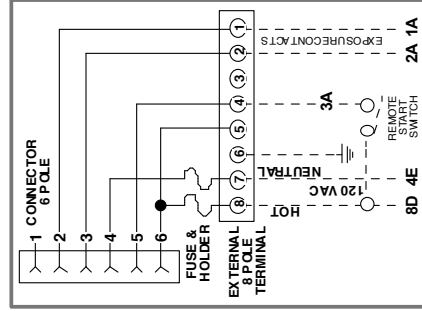
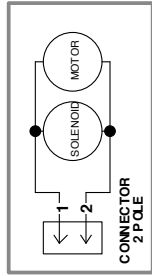
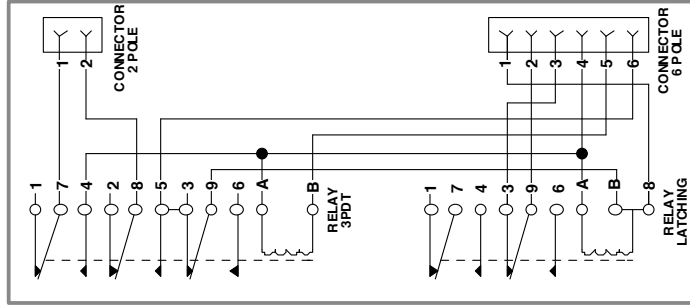
120 V.A.C. 60 HZ.



RELAY MODULE
P/N 828 4R2 9-115



DRIVE MODULE
P/N 828 4R4 9-115

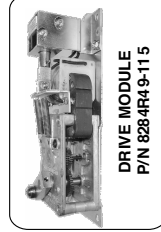


SWITCH MODULE
P/N 828 4R3 9

6 WIRE HOOK-UP

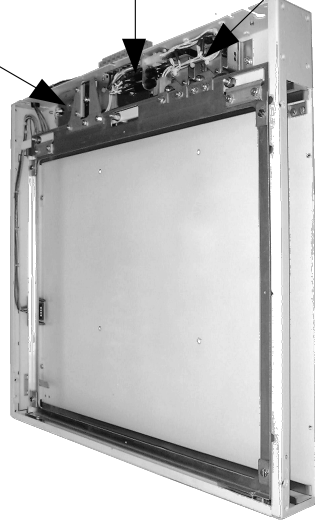
LEGEND FOR SCHEMATIC WIRING DIAGRAMS ABOVE

- 120 VAC Wiring, By Manufacturer
- 120 VAC Wiring, By Others
- - - Low-Voltage Wiring, By Manufacturer
- - - Low-Voltage Wiring, By Others



DRIVE MODULE
P/N 828 4R4 9-115

REPLACEMENT FUSES
QUAN. REO.D. (2) TIME-DELAY, TYPE FST
5 x 20 mm, 1.6 A, 250 Volts
P/N 828 4R1 9-01

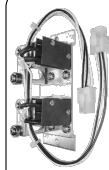


LEFT HAND LOAD
ILLUSTRATE



RELAY MODULE
P/N 828 4R2 9-115

UNDER PLASTIC SHIELD



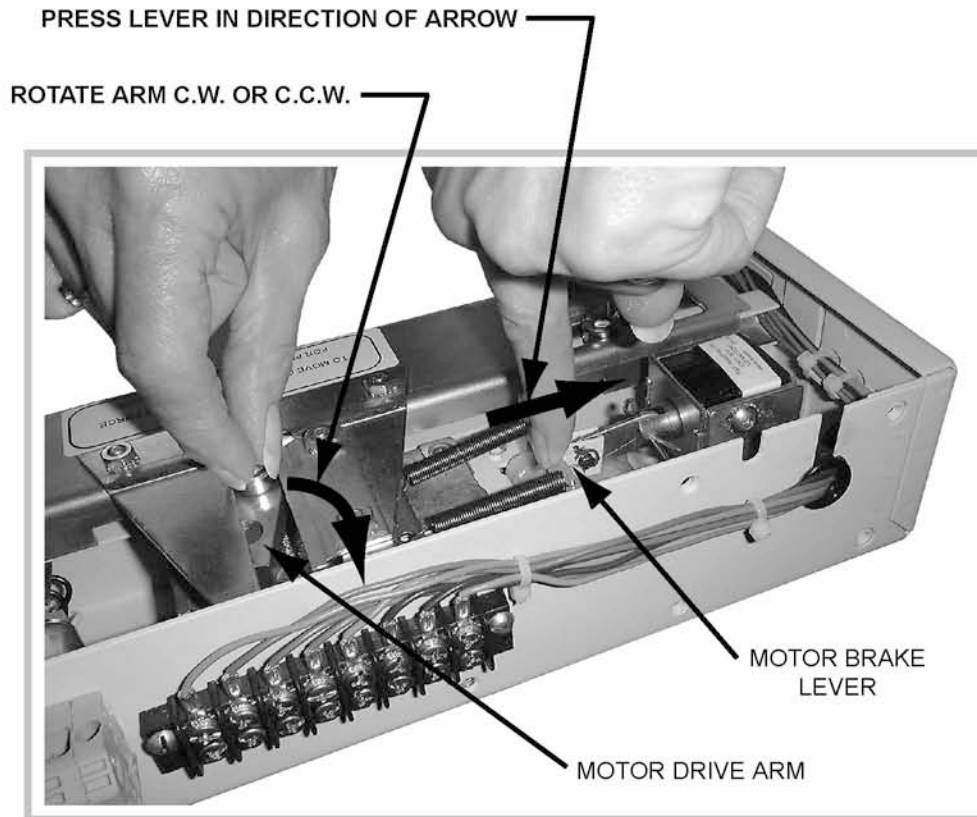
SWITCH MODULE
P/N 828 4R3 9

When ordering replacement parts provide MODEL AND SERIAL NUMBER
For service and parts contact:

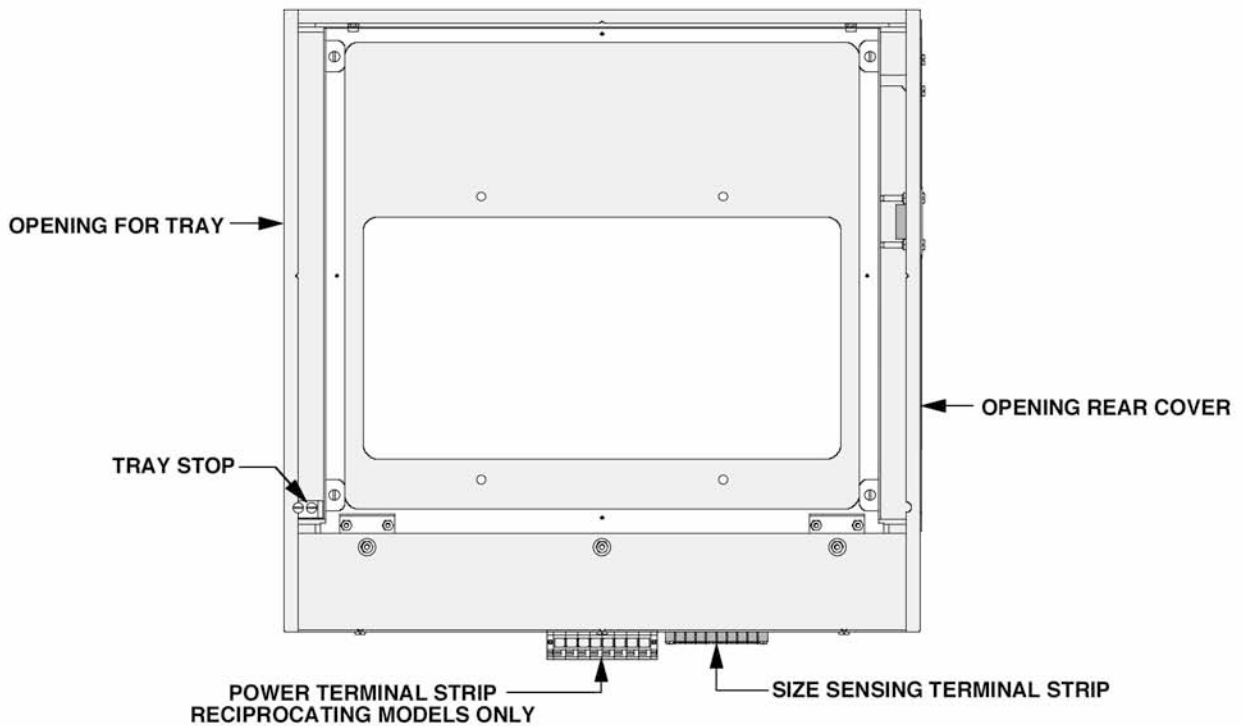
Poersch Metal Mfg. Co.
4027 W. Kinzie St.
Chicago, IL 60624 USA
Phone: 773.722.0890, Fax: 773.722.4122
Web: www.poerschmetal.com

INSTRUCTIONS

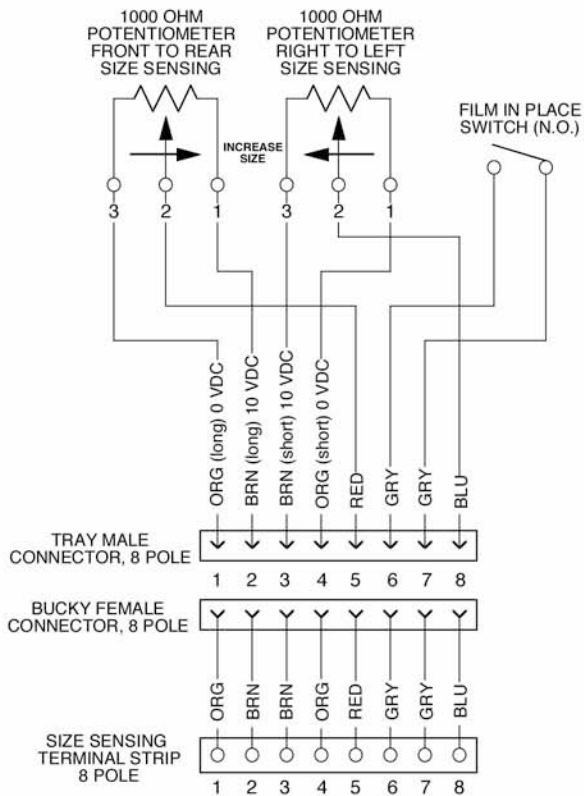
HOW TO MANUALLY MOVE RECIPROCATING PLATFORM



- STEP 1** DISCONNECT POWER TO BUCKY.
- STEP 2** Remove bucky motor compartment top cover.
- STEP 3** Release motor brake by pressing lever back with finger, in direction of arrow, away from springs. (see photo above)
- STEP 4** Rotate motor drive arm in either direction. (see photo above)
Note, bucky will automatically reset itself when power is turn on.



BUCKY - LEFT HAND LOADING
TURN PAGE FOR INSTRUCTIONS
HOW TO SWITCH LOADING SIDE FROM LEFT TO RIGHT

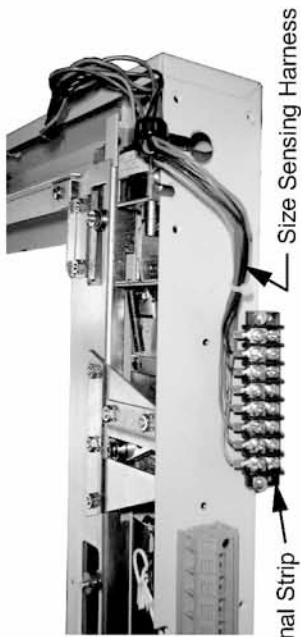


OUTPUT VOLTAGE

With 10 ± 0.01 VDC applied across potentiometers (pins 1 and 2 for front to rear sizing; pins 3 and 4 for right to left sizing), the voltage measured between terminals 1 and 5 (for front to rear sizing) and 4 and 8 (for right to left sizing) for various cassette sizes listed below.

CASSETTE SIZE (OUTSIDE DIM.)	STATED FILM SIZE	OUTPUT VOLTAGE ± 0.2	OHMS VALUES
154.5 mm	5 in.	0.60	940
157.5 mm	13 cm	0.69	931
205.3 mm	7 in.	2.06	794
207.5 mm	18 cm	2.12	788
230.7 mm	8 in.	2.80	720
268.8 mm	24 cm	3.90	610
281.5 mm	10 in.	4.26	574
306.9 mm	11 in.	5.00	500
327.5 mm	30 cm	5.60	440
332.3 mm	12 in.	5.70	430
383.1 mm	35 cm	7.02	298
459.3 mm	43 cm	9.40	60

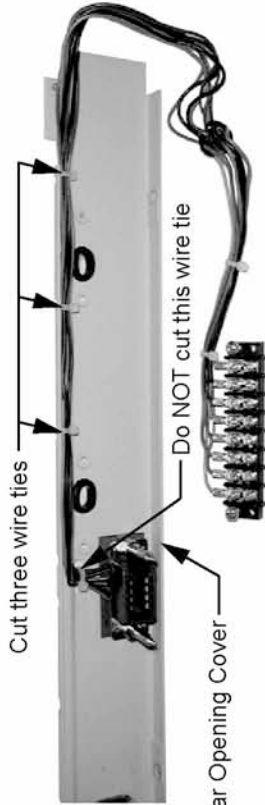
WIRING SCHEMATIC FOR SIZE SENSING
MODELS RRJ & RXJ BUCKYS, MODEL RSJ GRID CABINETS
AND MODEL QJ TRAYS



Terminal Strip → Size Sensing Harness

STEP 1

Remove bucky motor compartment top cover and unscrew size sensing terminal strip from outside of bucky (Note: do NOT disconnect wires from terminal strip). Cut two wire ties binding size sensing harness inside motor compartment. Remove grommet and lift out harness from hole on side of bucky.



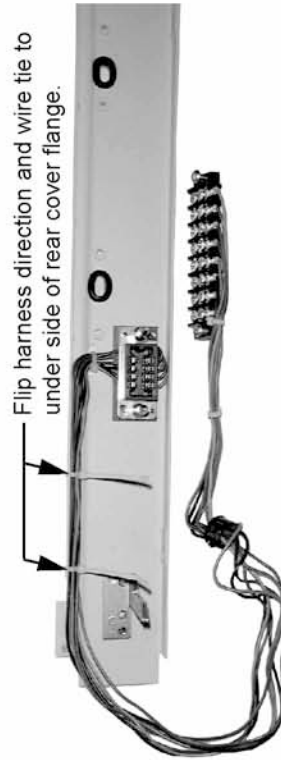
Cut three wire ties →

Do NOT cut this wire tie →

Rear Opening Cover →

STEP 2

Unscrew four screws fastening tray opening, rear cover to bucky, remove rear cover from bucky. Cut three wire ties binding harness along top flange of rear cover. Do NOT cut wire tie above the blue female connector assembly.



Flip harness direction and wire tie to under side of rear cover flange. →

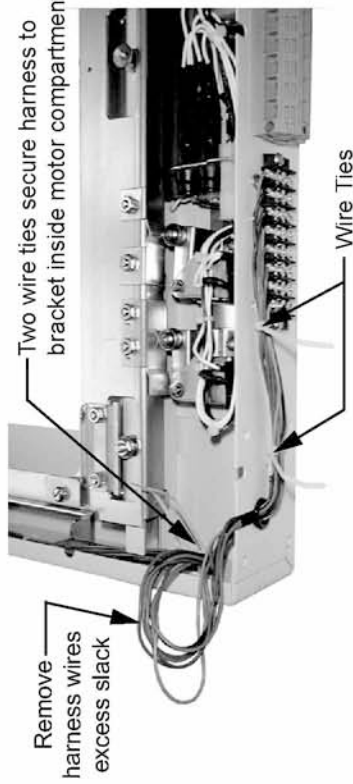
STEP 3

Flip size sensing harness 180° to other direction and wire tie securely along under side of rear cover top flange.



STEP 4

Unscrew "tray stop" from bottom of tray side of bucky; refasten stop at opposite diagonal corner. Reinstall rear cover into opposite opening of bucky and fasten size sensing terminal strip to outside of bucky.



Remove harness wires excess slack →

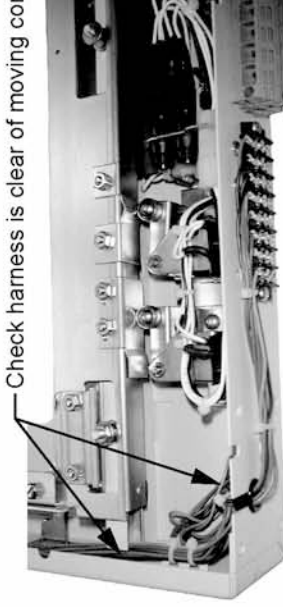
Two wire ties secure harness to bracket inside motor compartment →

Wire Ties →

STEP 5

Remove grommet and dress harness wires thru hole on side of bucky, reinsert grommet. Secure harness with two wire ties inside motor compartment and two wire ties outside bucky. BEFORE pulling wire ties tight remove slack from each wire of harness as shown above.

Check harness is clear of moving components. →



STEP 6

Tightly bundle harness excess wire and secure inside motor compartment away from all moving components. Replace and fasten top cover securely.

INSTRUCTIONS
HOW TO SWITCH BUCKY LOADING SIDE FROM LEFT TO RIGHT
 FOLLOW SIMILAR PROCEDURE WHEN SWITCHING FROM RIGHT TO LEFT